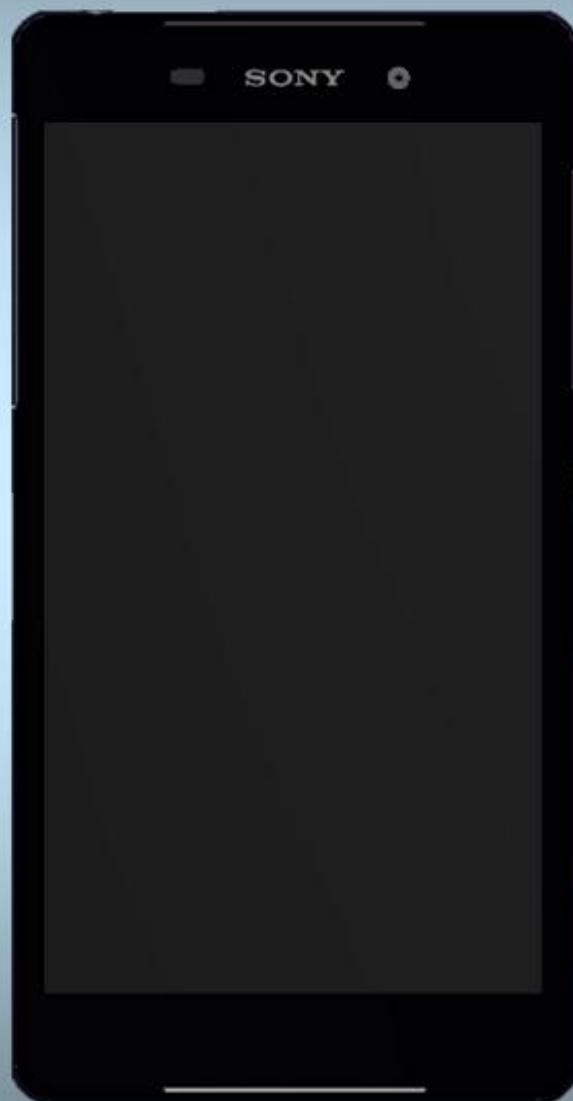


Component Replacement

- electrical -



Xperia™ Z2
D6502, D6503, D6543, L50w

CONTENTS

1 Replaceable Components 3

2 Component Placing..... 5

3 Additional Repair info 6

4 Revision History 10

For general information about electrical repair related issues, refer to 1220-1336: Generic Repair Manual - electrical

Test after electrical replacement: refer to 1273-1772 Mechanical Test Instruction

Do not remove shield can lids (Heat pasta are added and RF performance will be damaged)

1 Replaceable Components

EXPLANATION OF ABBREVIATIONS USED IN THE COLUMN 'COMMENTS' BELOW

COMPONENT LOCATION

P = Primary side

S = Secondary side

REPAIR METHOD

HA = Hot Air (removal & mounting)

ST = Soldering Tool (removal & mounting)

HA/ST = Hot Air for removal - Soldering Tool for mounting

BGA = BGA Station

BH = Bottom Heater

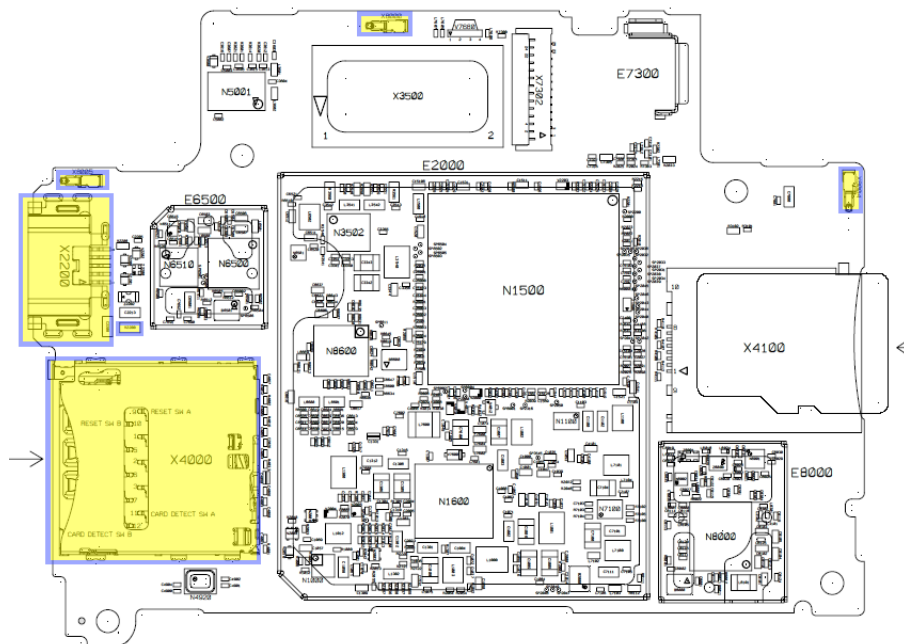
ADDITIONAL INFORMATION

⇒ **1** (2,3,4, etc.) = Proceed to 'Additional Repair Info' for further instructions in the indicated section(s).

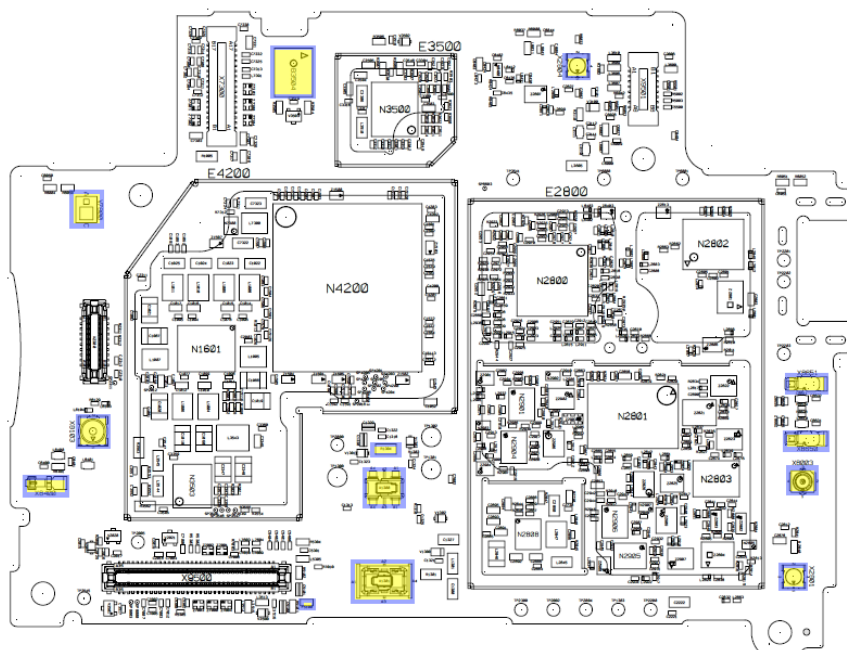
Position	Component	Part no.	Comments
B3504	Microphone	1210-7410	S HA+BH or BGA ⇒1
F5100	Fuse 0.25A 1.0*0.5mm	1265-7224	S HA+BH ⇒2
R1304	Resistor 0.01 Ohm +/-1% 200.0 mW (1.6x0.	1238-2147	S HA+BH ⇒3
R2200	Resistor 0.0 Ohm +/-50m 63.0 mW K0603	1000-0257	P HA+BH ⇒4
V7800	LED flash LED 2.03mmx1.63mmx0.70mm	1277-7270	S HA+BH ⇒5
X1300	Conn BtB Plug 4p HIROSE/BM22	1264-8491	S HA+BH ⇒6
X1301	Conn BtB Receptacle 4p HIROSE/BM22	1264-6156	S HA+BH ⇒7
X2200	Conn USB B Receptacle 5p	1268-3388	P HA+BH or BGA ⇒8
X2801	Conn Coax Receptacle 1p	1237-5326	S HA+BH ⇒9
X2804	Conn Coax Receptacle 1p	1237-5326	S HA+BH ⇒10
X4000	Card Conn SIM	1271-9742	P HA+BH or BGA ⇒11
X8000	Conn Leaf Spring Plug 1p Antenna/GND Spr	1239-2123	P HA+BH ⇒12
X8003	Conn Coax Receptacle 1p	1261-3585	S HA+BH ⇒13
X8004	Conn Leaf Spring Plug 1p Antenna/GND Spr	1239-2123	P HA+BH ⇒12
X8005	Conn Leaf Spring Plug 1p Antenna/GND Spr	1239-2123	P HA+BH ⇒12
X8103	Conn Coax Receptacle 0p test switch	1221-6477	S HA+BH ⇒14
X8400	Conn Leaf Spring Plug 1p	1252-2057	S HA+BH ⇒15
X8650	Conn Leaf Spring Plug 1p Antenna/Groundi	1238-5878	S HA+BH ⇒16
X8651	Conn Leaf Spring Plug 1p Antenna/Groundi	1238-5878	P HA+BH ⇒16

2 Component Placing

To access the Component Placing document, double-click the icon below.
Applicable for on-screen viewing only – icon not shown on hard-copies.



Primary side



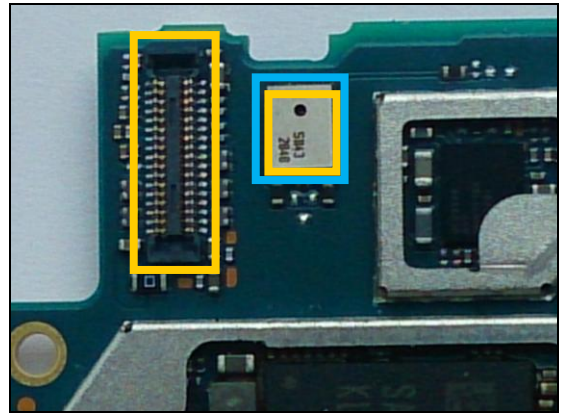
Secondary side

3 Additional Repair info

1

B3504

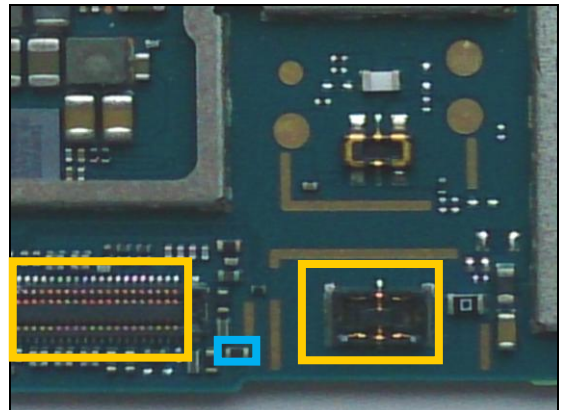
Replace if no audio from secondary mic
Protect the BtB connectors with capton tape!
When replacing protect secondary mic with capton tape!



2

F5100

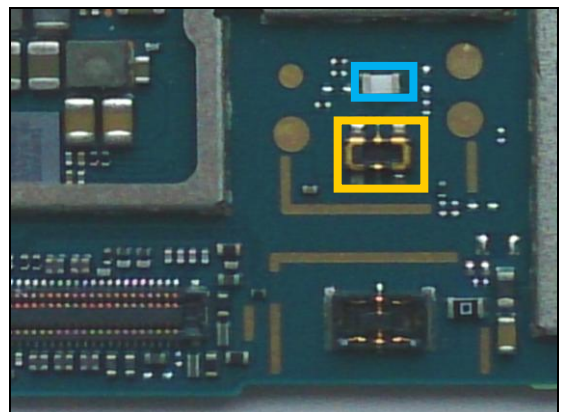
Replace if open circuit (Vibrator not working)
Protect the BtB connectors with capton tape!



3

R1304

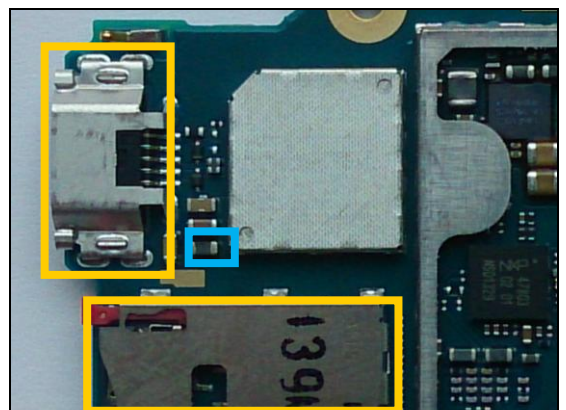
Replace if open circuit (Phone dead)
Protect the BtB connector with capton tape!



4

R2200

Replace if open circuit (USB charger or data transfer not working)
Protect the USB and SIM connectors with capton tape!

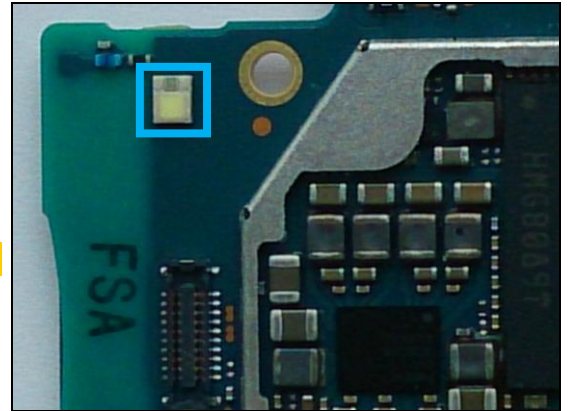


Repair Actions: Additional Repair Info

5

V7800

Replace if Flash LED not working

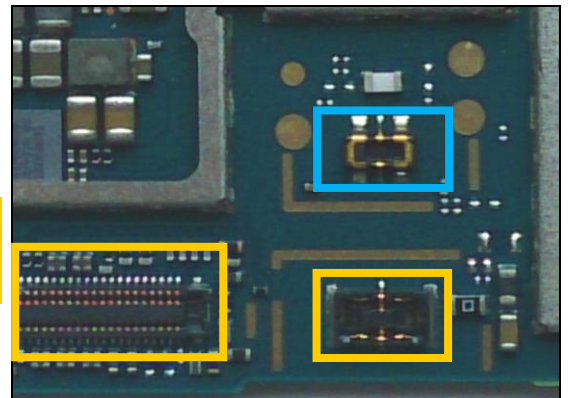


6

X1300

Replace if mechanical damaged. (Phone dead or power off)

Protect the BtB connectors with capton tape!

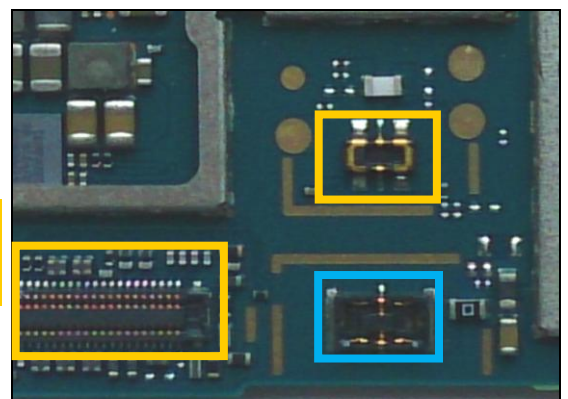


7

X1301

Replace if mechanical damaged (Main charger not working)

Protect the BtB connectors with capton tape!

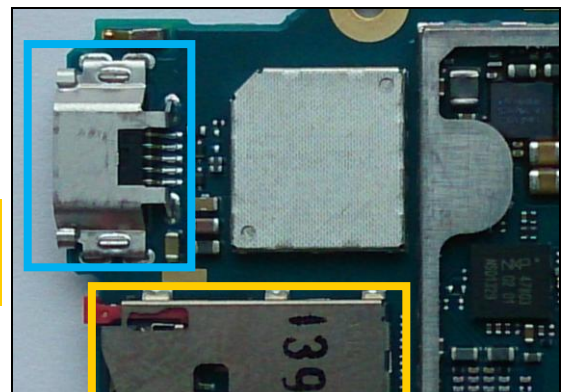


8

X2200

Replace if mechanical damaged (USB charger or data transfer not working)

Protect the SIM connector with capton tape!

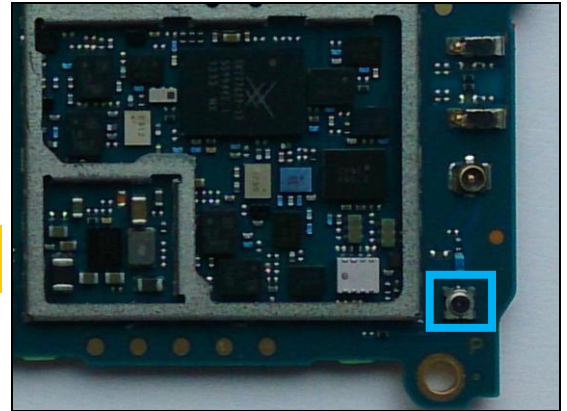


Repair Actions: Additional Repair Info

9

X2801

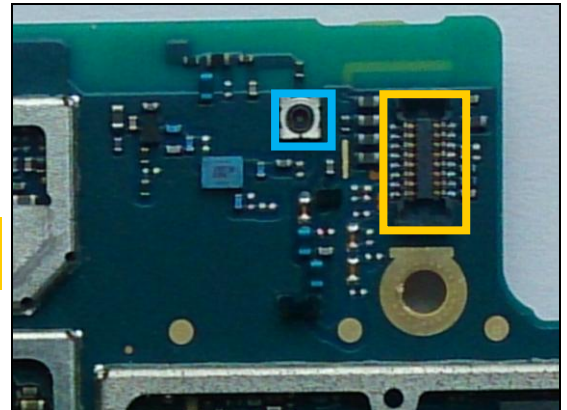
Replace if open circuit 1-2 (No or bad network, main antenna)



10

X2804

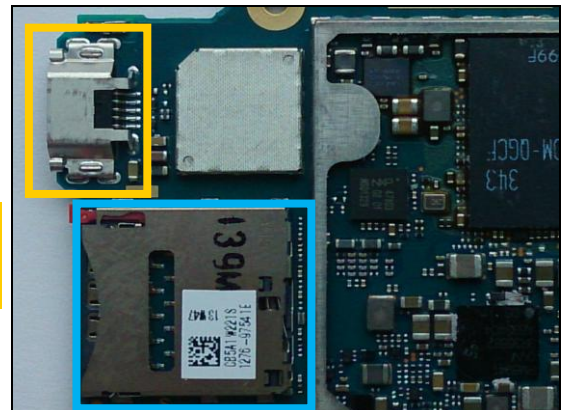
Replace if open circuit 1-2 (No or bad GPS)
Protect the BtB connector with capton tape!



11

X4000

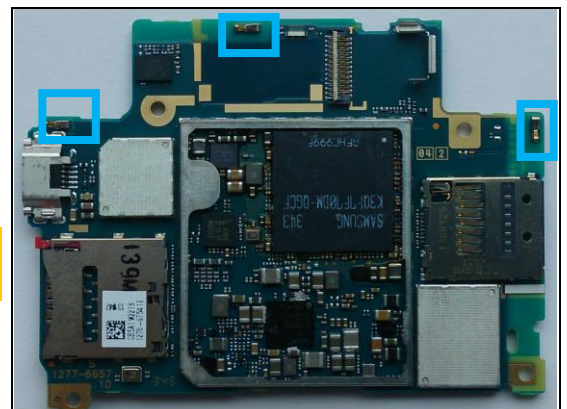
Replace if mechanical damaged (No network, restart, No SIM card inserted)
Protect the USB connector with capton tape!



12

X8000,X8001, X8002

Replace if mechanical damaged (No or bad GPS)
Protect the USB connector with capton tape!

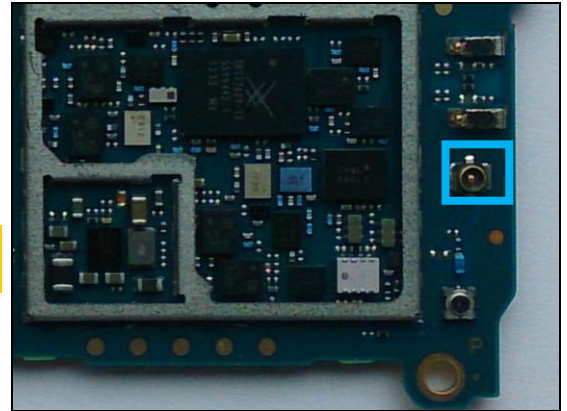


Repair Actions: Additional Repair Info

13

X8003

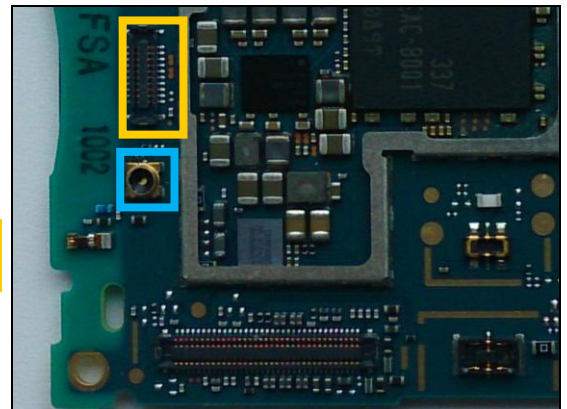
Replace if mechanical damaged (No or bad network, main antenna)



14

X8103

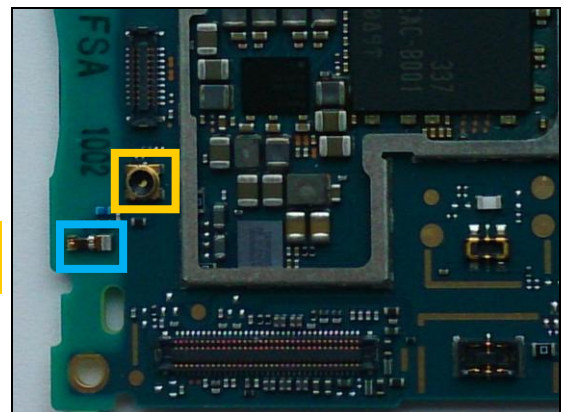
Replace if open circuit 1-2 (no or bad WLAN/ BT)
Protect the BtB connector with capton tape!



15

X8400

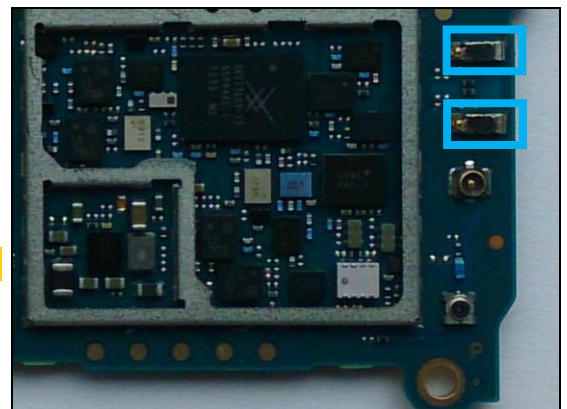
Replace if mechanical damaged (no or bad WLAN/ BT)
Protect the RF connector with capton tape!



16

X8650,X8651

Replace if mechanical damaged (no or bad NFC)



4 Revision History

Rev.	Date	Changes / Comments
1	2014-05-28	Initial release
2	2014-05-28	X1300 and X1301 position corrected

