


7. Level 2 Repair

7-1. Pre-requisite

	
Tweezers / Disass'y Stick / Screw Driver	Anti-static Gloves
	
OCTA Disassembly Holder	Anti-static Mat
	
Acryl Jig Rework Form	Glass Absorbers (2ea)
	
Tape Rework Form	Mobile Dryer

7-2. Parts which must be changed after repair

OCTA Form Tape	 A blue rectangular frame with a white rectangular center, used for holding the phone during repair.
Bracket Cu Tape	 A blue rectangular piece of tape with a small tab on the right side, used for securing the bracket.
Touch Key Top Tape	 Two images showing the Touch Key Top Tape. The left image shows the tape with a blue circuit board and white connectors. The right image shows the tape with a blue circuit board and white connectors, but with a different configuration of components.

7-3. Disassembly

1



Temperature :
 $70 \pm 10^{\circ} \text{C}$

1) After heating for 10 minutes the device at $70 \sim 80^{\circ}\text{C}$, take out the device from Mobile dryer.

2



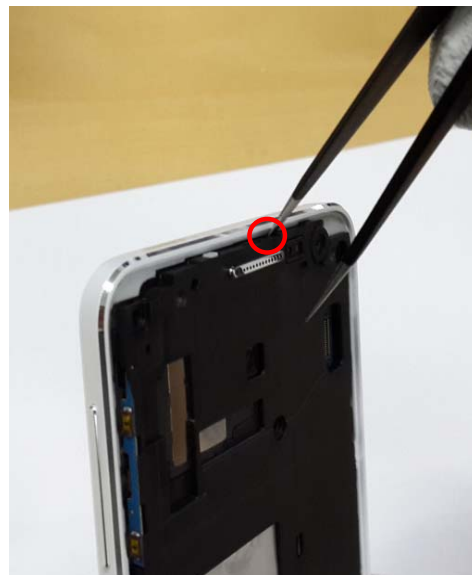
1) Detach the Bracket CU tape carefully from the OCTA Cu sheet using Glass absorber and holder.
2) Be careful not to separate LCD from TSP.

3



1) Disassemble loosen 12 Point of Bracket

4



1) Disassemble Bracket and REAR

5



1) Detach the Bracket and REAR

6



1) Loosen a Screw in PBA Ass'y

7



1) Detach Connector and Coaxial Cable from PBA

8



1) Detach the PBA from bottom REAR
2) Be careful not to damage

9



1) Detach Main and Sub Camera on PBA

10



1) Detach the Receiver, Speaker, Coaxial Cable and Battery

11







1) Detach upper Sub PBA and Power key
2) Be careful not to Damage

12



1) Detach lower Sub PBA from Bracket
2) Be careful not to Damage

7-4. Assembly

<div data-bbox="162 325 235 388" data-label="Text">1</div> 	<div data-bbox="795 325 868 388" data-label="Text">2</div> 
<p>1) Assemble lower Sub PBA on Bracket</p>	<p>1) Assemble the Upper/Lower SUB PBA and Coaxial Cable Then RCV, Speaker, Power Key</p>
<div data-bbox="162 1129 235 1192" data-label="Text">3</div> 	<div data-bbox="795 1129 868 1192" data-label="Text">4</div> 
<p>1) Attach Battery on Bracket 2) Press Battery using Battery Pressing JIG.</p>	<p>1) Attach Main and Sub Camera on PBA</p>

5



- 1) Assemble PBA on Bracket
- 2) Assemble lower Sub PBA and Main PBA

6



- 1) Assemble Connector on the PBA Assy
- 2) Assemble Coaxial Cable

7



- 1) Tighten a screw
1.2 ± 0.1 Kgf/cm²

8



- 1) Assemble PBA ass'y and REAR

<div data-bbox="162 231 235 289" data-label="Text">5</div> 	<div data-bbox="792 294 865 352" data-label="Text">6</div> 
<p>1) Tighten screw the 12 point 1.2 ± 0.1 Kgf/cm²</p>	<p>1) Assemble LCD Connector 2) Attach LCD and REAR ass'y</p>
<div data-bbox="162 1165 235 1224" data-label="Text">7</div> 	
<p>1) Press OCTA Window using Window pressing JIG.</p>	