

Component Replacement - electrical -



Xperia™ Z5
E6603 and E6653

Xperia™ Z5 Dual
E6633 and E6683

CONTENTS

1	Replaceable Components	3
2	Component Placing.....	6
3	Additional Repair info	10
4	Revision History	15

For general information about electrical repair related issues, refer to 1220-1336: Generic Repair Manual - electrical

Baking prior to repair is required, if the board have been exposed to air more than 12 hours from PWB package opening. Too long exposure time increase the level of moisture in PWB and the PWB could delaminate during repair process and result in direct or latent failures and reduce reliability.

The boards shall be baked in 125°C ±5°C for 4 hours.

Test after electrical replacement: refer to 1273-1772 Mechanical Test Instruction

All Electrical components are RLC level B, Reversed Logistic Classification, See the Spare Part Handling chapter in Mechanical/Generic Repair Manual 1220-1333.

Do not remove shield can lids (Heat pasta are added and RF performance will be damaged)

1 Replaceable Components

EXPLANATION OF ABBREVIATIONS USED IN THE COLUMN 'COMMENTS' BELOW

COMPONENT LOCATION

P = Primary side

S = Secondary side

REPAIR METHOD

HA = Hot Air (removal & mounting)

ST = Soldering Tool (removal & mounting)

HA/ST = Hot Air for removal - Soldering Tool for mounting

BGA = BGA Station

BH = Bottom Heater

ADDITIONAL INFORMATION

⇒1 (2,3,4, etc.) = Proceed to 'Additional Repair Info' for further instructions in the indicated section(s).

Component Replacement (elect)

Position	Component	Part no.	Comments
CN1300	Conn BtB Plug 4p HIROSE/BM22	1281-9973	S HA+BH ⇒1
CN2600	Conn Leaf Spring Plug 1p	1289-4034	P HA+BH ⇒2
CN2611	Conn Coax Receptacle 1p	1261-3585	S HA+BH ⇒3
CN2612	Conn Leaf Spring Plug 1p	1289-4034	P HA+BH ⇒2
CN2613	Conn Leaf Spring Plug 1p	1289-4034	P HA+BH ⇒2
CN2631	Conn Leaf Spring Plug 1p WH : 0.8+-0.2	1294-8905	P HA+BH ⇒2
CN2800	Conn Leaf Spring Plug 1p	1289-4034	S HA+BH ⇒4
CN2801	Conn Leaf Spring Plug 1p	1289-4034	S HA+BH ⇒4
CN2802	Conn Coax Receptacle 1p	1261-3585	S HA+BH ⇒5
CN2803	Conn Coax Receptacle 1p	1287-3442	S HA+BH ⇒6
CN4000	Card Conn SIM Dual nanoSIM connector	1295-4064	P HA+BH or BGA ⇒7
CN4100	Card Conn Micro SD	1281-9124	P HA+BH or BGA ⇒9
CN4751	Conn Leaf Spring Plug 1p	1289-4882	S HA+BH ⇒10
CN4752	Conn Leaf Spring Plug 1p	1289-4882	S HA+BH ⇒10
CN4753	Conn Leaf Spring Plug 1p	1289-4882	S HA+BH ⇒10
CN4754	Conn Leaf Spring Plug 1p	1289-4034	P HA+BH ⇒11
CN7900	Conn Leaf Spring Plug 1p	1289-4034	P HA+BH ⇒12
CN7901	Conn Leaf Spring Plug 1p	1289-4034	P HA+BH ⇒12
CN8003	Conn Coax Receptacle 1p	1287-3442	S HA+BH ⇒14
CN8005	Conn Coax Receptacle 1p	1287-3442	S HA+BH ⇒15
CN8009	Conn Leaf Spring Plug 1p	1289-4034	P HA+BH ⇒16
CN8650	Conn Leaf Spring Plug 1p	1294-8163	S HA+BH ⇒17
CN8651	Conn Leaf Spring Plug 1p	1294-8163	S HA+BH ⇒17
D7800	LED White 1.63mm x 2.03mm	1278-5197	S HA+BH ⇒18
FL2202	Filter Ceramic Lo-pass 50.0 MHz 1608	1269-0526	S HA+BH ⇒19
R1306	Resistor 0.01 Ohm +/-1% 200.0 mW (1.6x0.	1238-2147	S HA+BH ⇒20
UC7602	Fuse 0.25A 1.0*0.5mm	1265-7224	S HA+BH ⇒21

Note: Valid for E6633 and E6683

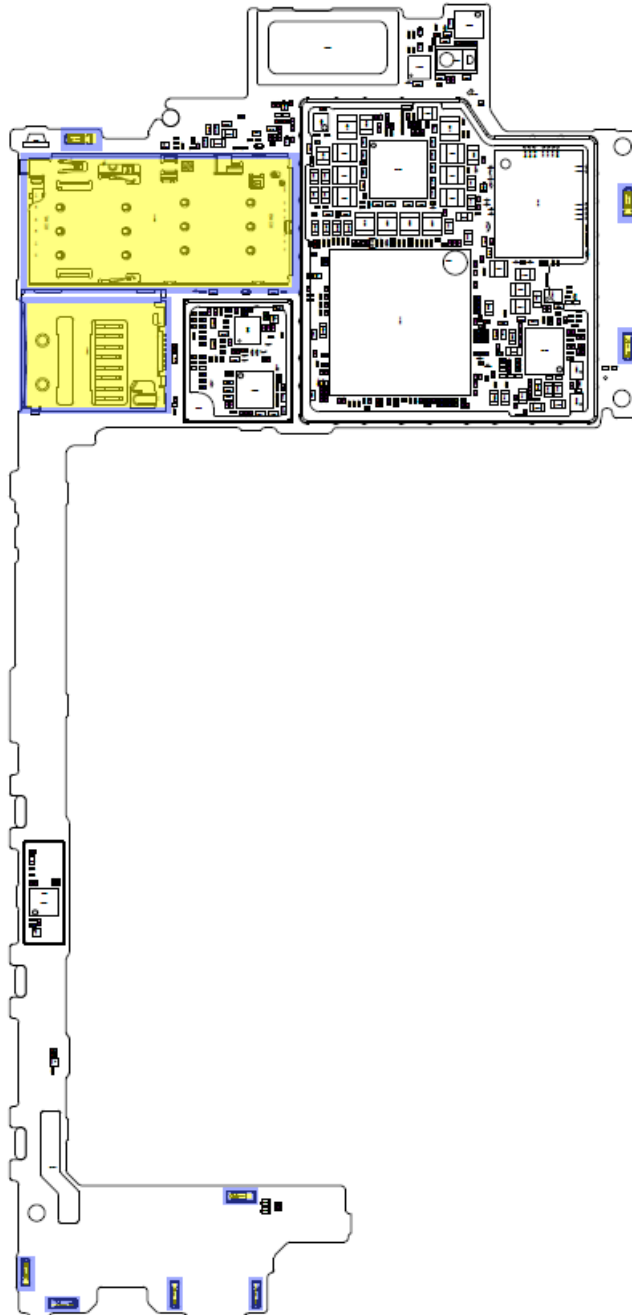
Component Replacement (elect)

Position	Component	Part no.	Comments
CN1300	Conn BtB Plug 4p HIROSE/BM22	1281-9973	S HA+BH ⇨1
CN2600	Conn Leaf Spring Plug 1p	1289-4034	P HA+BH ⇨2
CN2611	Conn Coax Receptacle 1p	1261-3585	S HA+BH ⇨3
CN2612	Conn Leaf Spring Plug 1p	1289-4034	P HA+BH ⇨2
CN2613	Conn Leaf Spring Plug 1p	1289-4034	P HA+BH ⇨2
CN2631	Conn Leaf Spring Plug 1p WH : 0.8+-0.2	1294-8905	P HA+BH ⇨2
CN2800	Conn Leaf Spring Plug 1p	1289-4034	S HA+BH ⇨4
CN2801	Conn Leaf Spring Plug 1p	1289-4034	S HA+BH ⇨4
CN2802	Conn Coax Receptacle 1p	1261-3585	S HA+BH ⇨5
CN2803	Conn Coax Receptacle 1p	1287-3442	S HA+BH ⇨6
CN4000	Card Conn Other microSD and nanoSIM comb	1288-5918	P HA+BH or BGA ⇨8
CN4751	Conn Leaf Spring Plug 1p	1289-4882	S HA+BH ⇨10
CN4752	Conn Leaf Spring Plug 1p	1289-4882	S HA+BH ⇨10
CN4753	Conn Leaf Spring Plug 1p	1289-4882	S HA+BH ⇨10
CN4754	Conn Leaf Spring Plug 1p	1289-4034	P HA+BH ⇨11
CN7900	Conn Leaf Spring Plug 1p	1289-4034	P HA+BH ⇨12
CN7901	Conn Leaf Spring Plug 1p	1289-4034	P HA+BH ⇨12
CN7998	Conn Leaf Spring Plug 1p	1289-4882	S HA+BH ⇨13
CN8003	Conn Coax Receptacle 1p	1287-3442	S HA+BH ⇨14
CN8005	Conn Coax Receptacle 1p	1287-3442	S HA+BH ⇨15
CN8009	Conn Leaf Spring Plug 1p	1289-4034	P HA+BH ⇨16
CN8650	Conn Leaf Spring Plug 1p	1294-8163	S HA+BH ⇨17
CN8651	Conn Leaf Spring Plug 1p	1294-8163	S HA+BH ⇨17
D7800	LED White 1.63mm x 2.03mm	1278-5197	S HA+BH ⇨18
FL2202	Filter Ceramic Lo-pass 50.0 MHz 1608	1269-0526	S HA+BH ⇨19
R1306	Resistor 0.01 Ohm +/-1% 200.0 mW (1.6x0.	1238-2147	S HA+BH ⇨20
UC7602	Fuse 0.25A 1.0*0.5mm	1265-7224	S HA+BH ⇨21

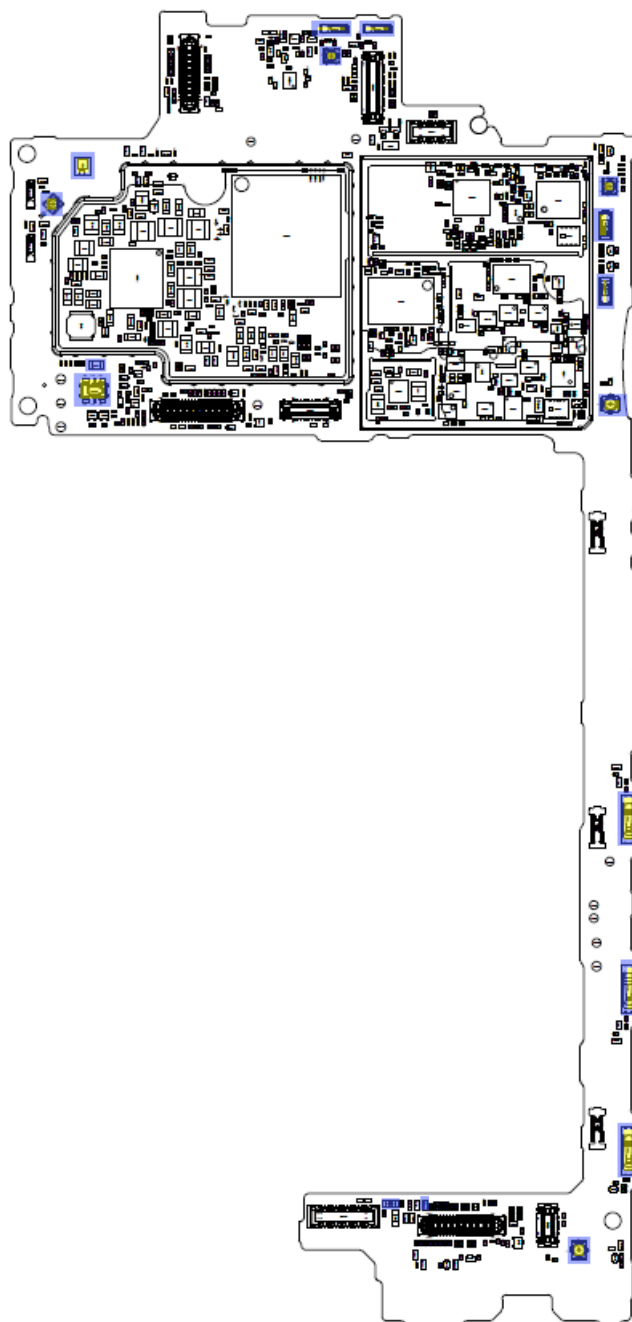
Note: Valid for E6603 and E6653

2 Component Placing

To access the Component Placing document, double-click the icon below.
Applicable for on-screen viewing only – icon not shown on hard-copies.

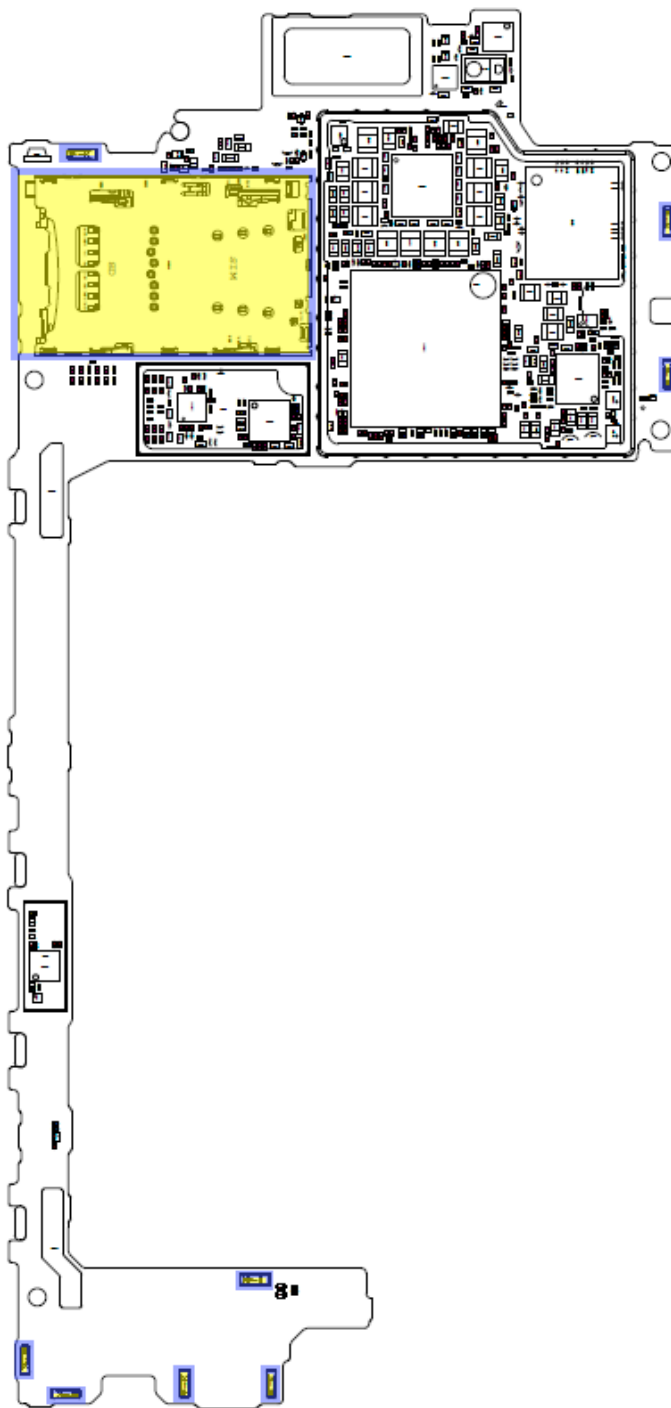


E6633 and E6683 Primary side

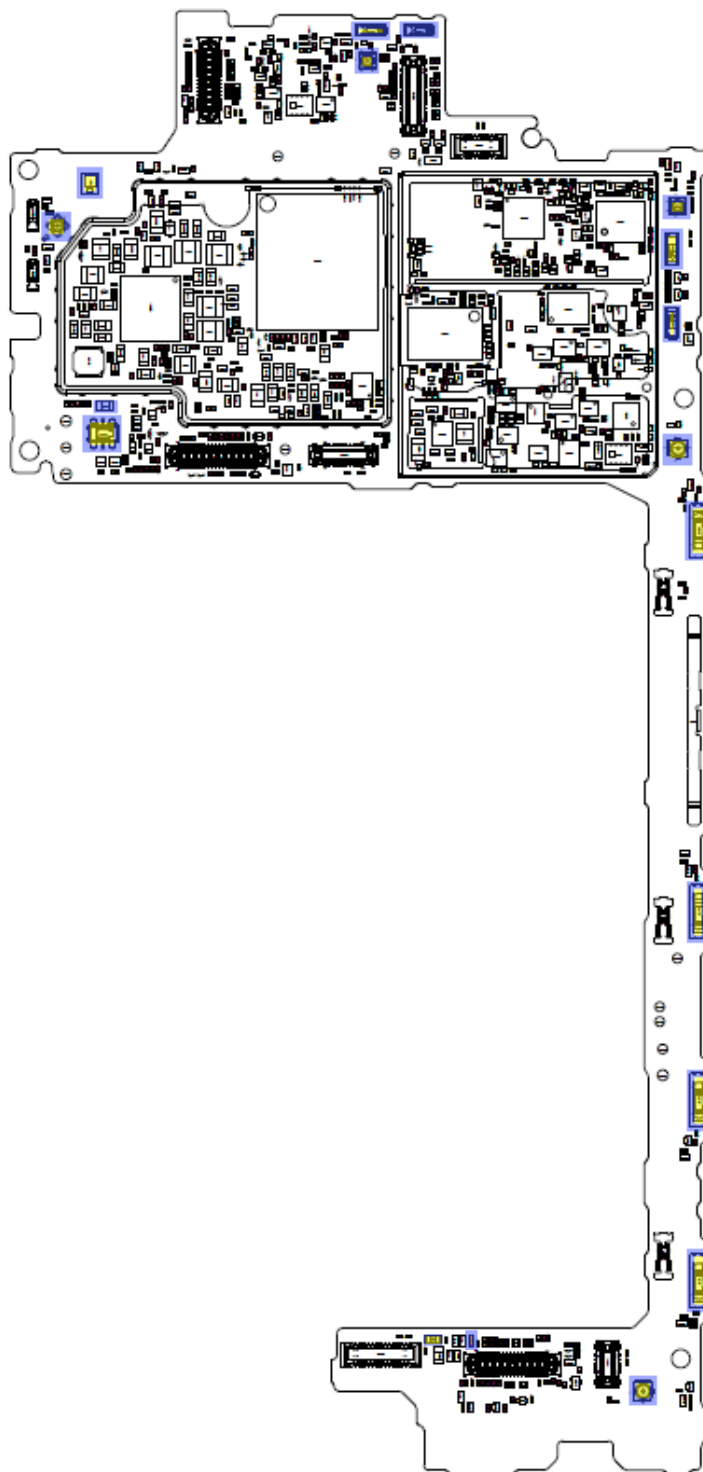


E6633 and E6683 Secondary side

To access the Component Placing document, double-click the icon below.
Applicable for on-screen viewing only – icon not shown on hard-copies.



E6603 and E6653 Primary side



E6603 and E6653 Secondary side

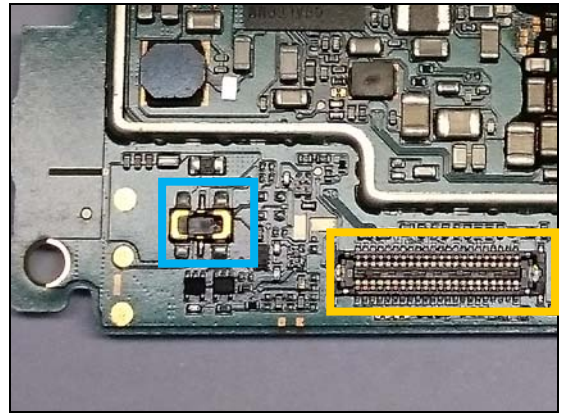
3 Additional Repair info

1

CN1300

Replace if mechanical damaged. (Phone dead or power off)

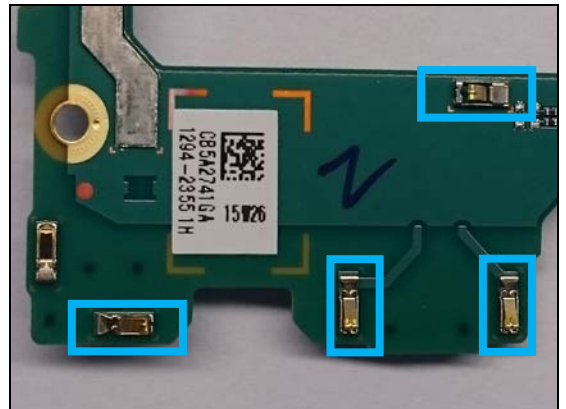
Protect the BtB connector with capton tape!



2

CN2600, CN2612, CN2613, CN2631

Replace if mechanical damaged (No or bad network, main antenna)

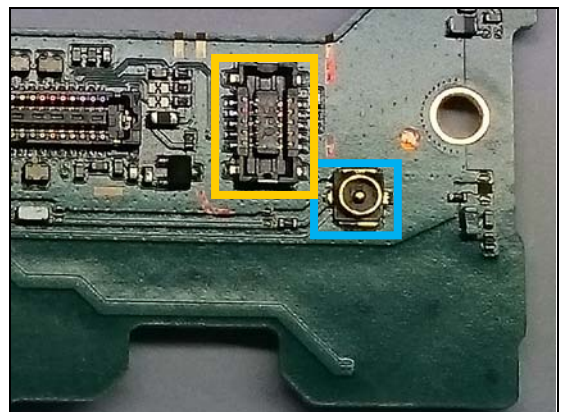


3

CN2611

Replace if mechanical damaged (No or bad network, main antenna)

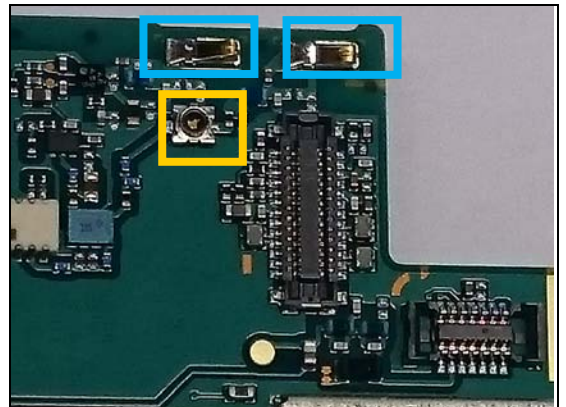
Protect the BtB connector with capton tape!



4

CN2800, CN2801

Replace if mechanical damaged (No or bad network, diversity antenna)

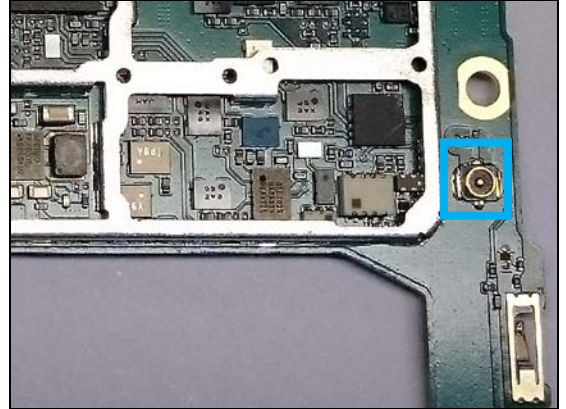


Repair Actions: Additional Repair Info

5

CN2802

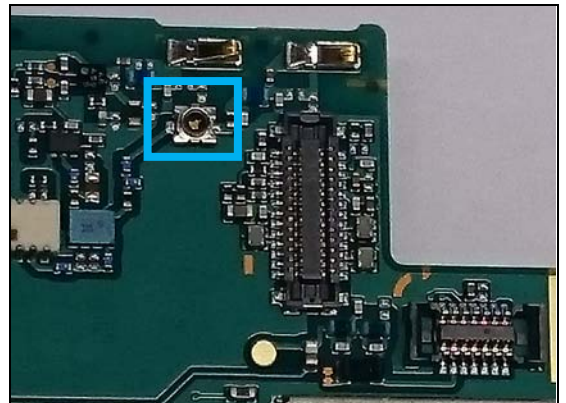
Replace if mechanical damaged (No or bad network, main antenna)



6

CN2803

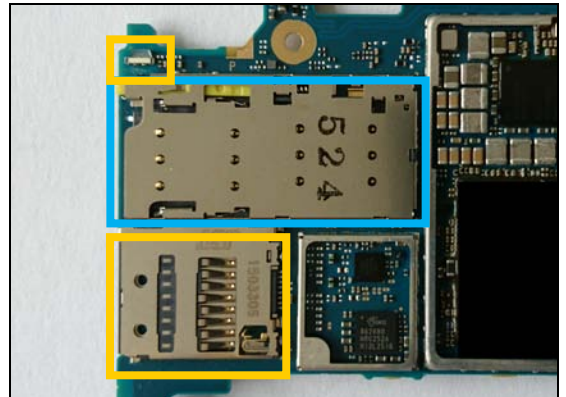
Replace if open circuit 1-4 (No or bad network, diversity antenna)



7

CN4000 E6633 E6683

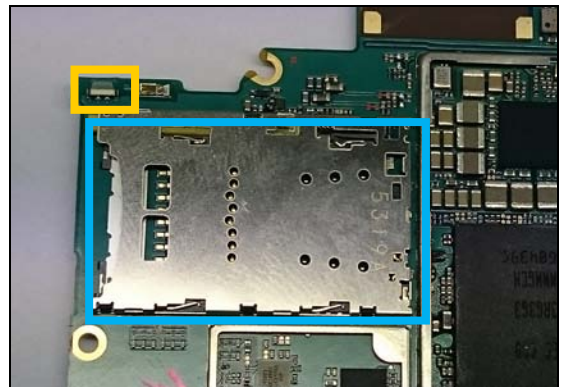
Replace if mechanical damaged (No network, restart, No SIM card inserted, NFC SIM problem, reset problem)
Protect the SD connector and LED with capton tape!



8

CN4000 E6603 E6653

Replace if mechanical damaged (No network, restart, No SIM card inserted, NFC SIM problem, reset problem, no SD card)
Protect the LED with capton tape!



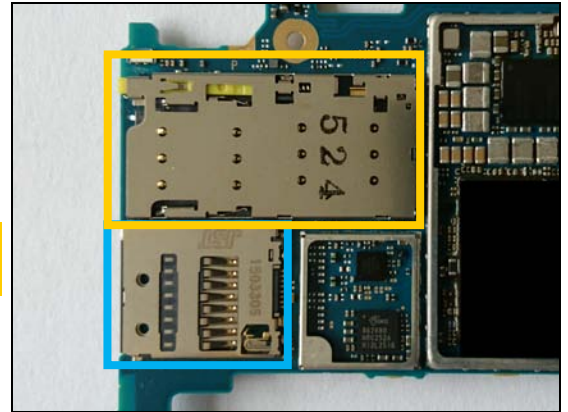
Repair Actions: Additional Repair Info

9

CN4100 E6633 E6683

Replace if mechanical damaged (No SD card)

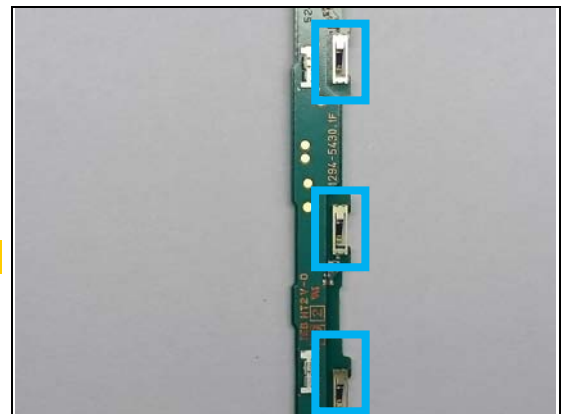
Protect the SIM connector with capton tape!



10

CN4751, CN4752, CN4753

Replace if mechanical damaged (GND contact)



11

CN4754

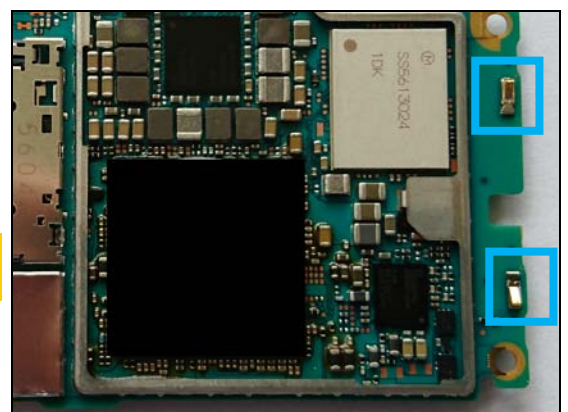
Replace if mechanical damaged (GND contact)



12

CN7900, CN7901

Replace if mechanical damaged (No or bad WLAN /BT, Main antenna)



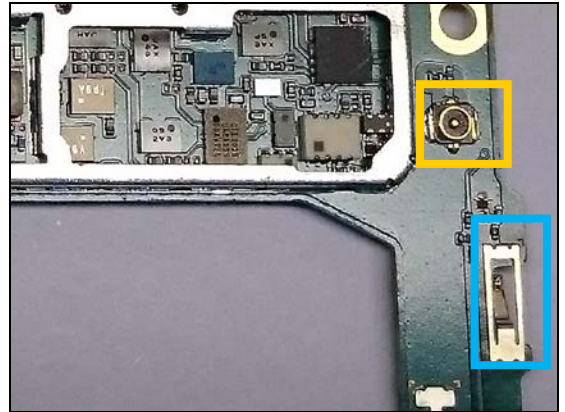
Repair Actions: Additional Repair Info

13

CN7998 E6603 E6653

Replace if mechanical damaged (No or bad WLAN / BT, Sub antenna)

Protect the RF connector with capton tape!

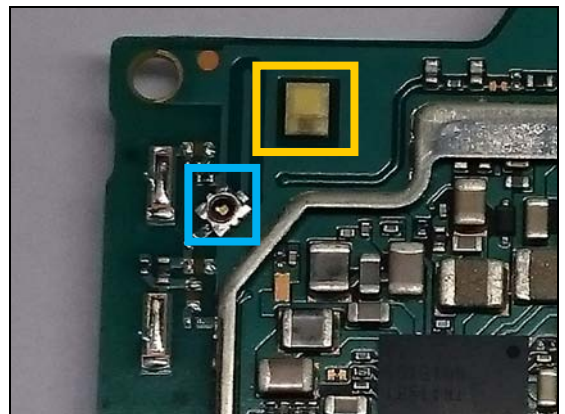


14

CN8003

Replace if open circuit 1-4 (No or bad WLAN / BT, Main antenna)

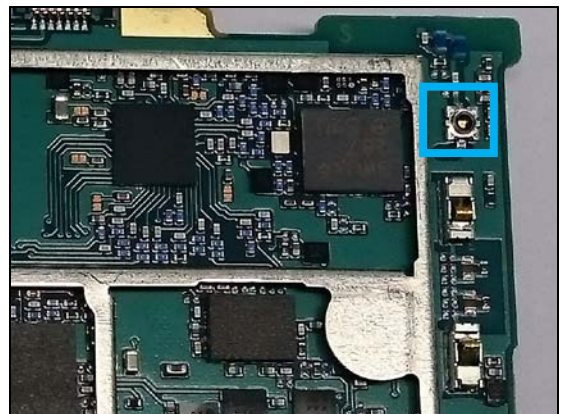
Protect the LED with capton tape!



15

CN8005

Replace if open circuit 1-4 (No or bad WLAN / BT, Sub antenna)

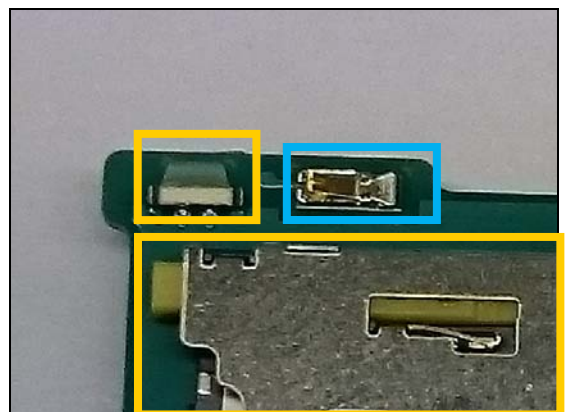


16

CN8009

Replace if mechanical damaged (No or bad WLAN / BT, Sub antenna)

Protect the LED and SIM connector with capton tape!

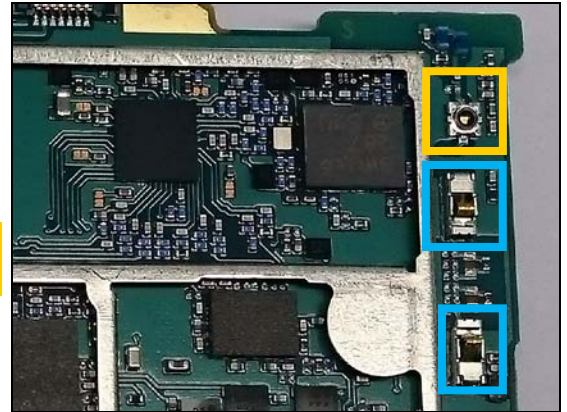


Repair Actions: Additional Repair Info

17

CN8650, CN8651

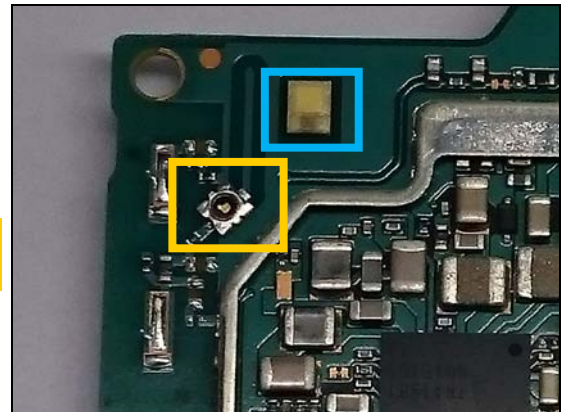
***Replace if mechanical damaged (No or bad NFC)
Protect the RF connector with capton tape!***



18

D7800

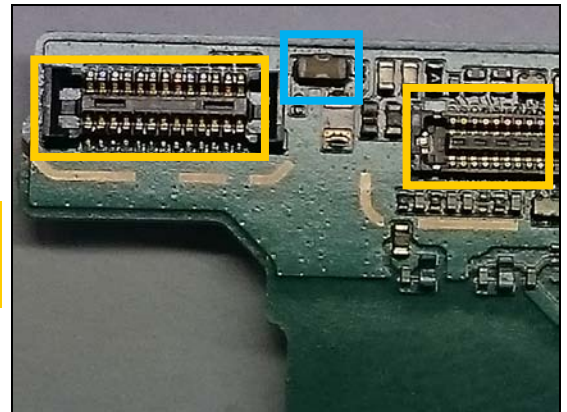
***Replace if Flash LED not working.
Protect the RF connector with capton tape!***



19

FL2202

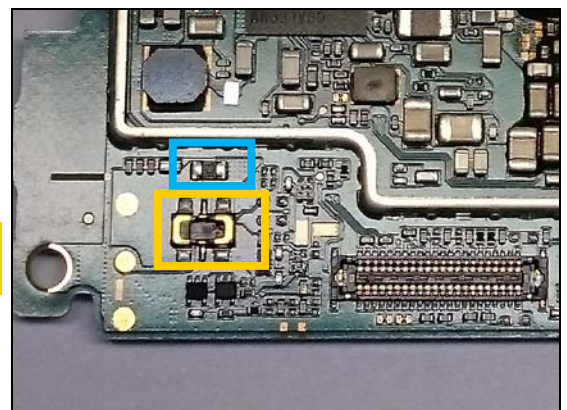
***Replace if open circuit (Not charging from USB connector)
Protect the BtB connectors with capton tape!***



20

R1306

***Replace if open circuit (Phone dead or power off)
Protect the BtB connector with capton tape!***



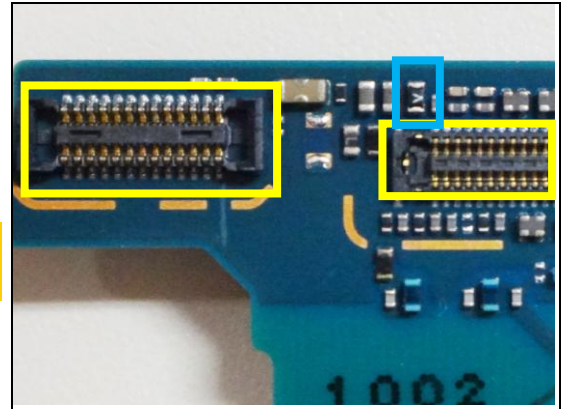
Repair Actions: Additional Repair Info

21

UC7602

Replace if backlight doesn't come on.

Protect the BtB connectors with capton tape!



4 Revision History

Rev.	Date	Changes / Comments
1	2015-09-18	Initial release
2	2015-10-05	Additional repair info added
3	2016-01-29	Add new component UC7602